



altipeak security

Secure all your digital assets with MFA everywhere

- ✓ Covers all use cases with MFA
- ✓ Passwordless on all devices
- ✓ Broadest choice of authenticators
- ✓ Authentication, Transaction & Digital signature
- ✓ Unique simplicity to deploy Mobile apps
- ✓ Comprehensive, competitive and simple pricing



About Us



Altipeak is a Swiss based company at the forefront of security technology

We provide a robust, practical, flexible and affordable Access Management solution

- ❖ Customers in 10 countries
- ❖ From all sectors and size
- ❖ From all sectors
- ❖ Public sector, Private & Retail Banking, Industry, Services, Insurance, Telco, Utilities
- ❖ World clock time zones support
- ❖ VAR, Service providers & Technology partners
- ❖ Professional services for custom projects
- ❖ We address all your MFA needs for all use cases



Professional Services

We help our partners to meet customer expectations

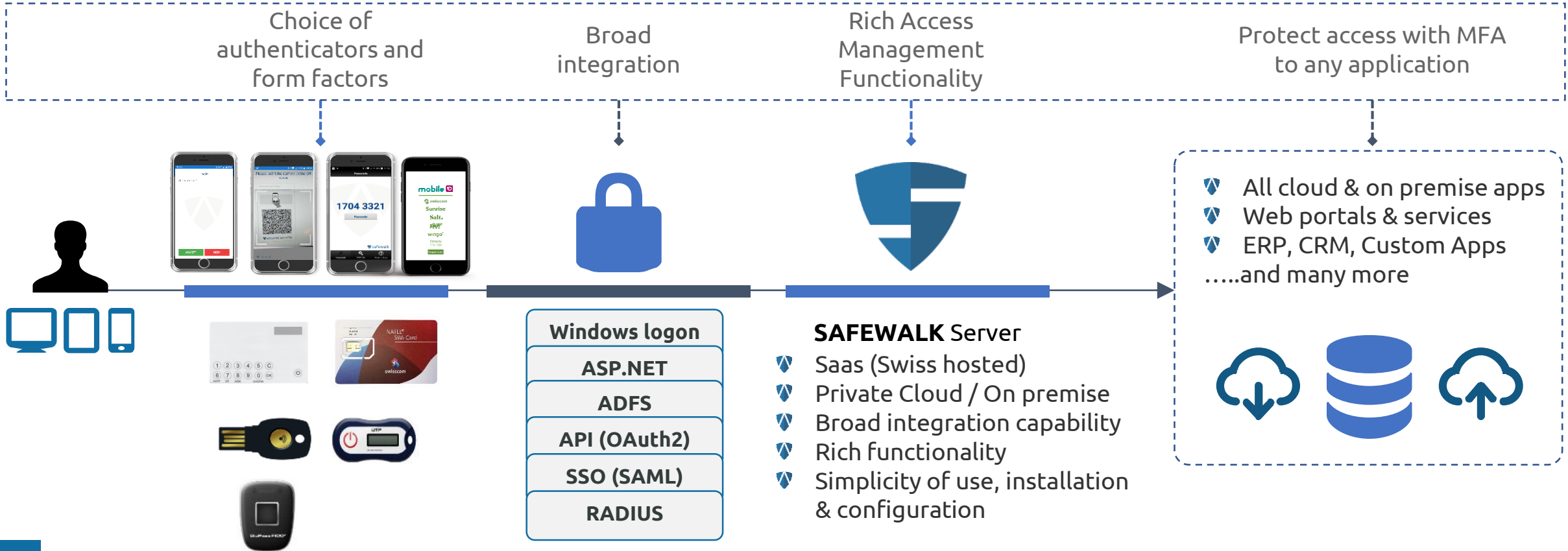
We offer Added Value and cost-effective professional services
Consulting, Development and Customization

- ❖ Custom development (Mobile, Web, Security, etc.)
- ❖ Extended Safewalk functionality development
- ❖ Mobile apps branding & customization
- ❖ Safewalk & Mobile APIs integration
- ❖ MFA integration into custom Mobile apps (Mobile API)
- ❖ Derived technology development & integration



SAFEWALK

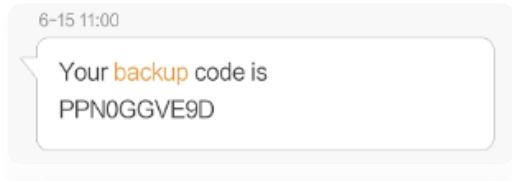
Strong authentication everywhere with anything
Secure, Simple, Practical, Flexible, Cost-effective



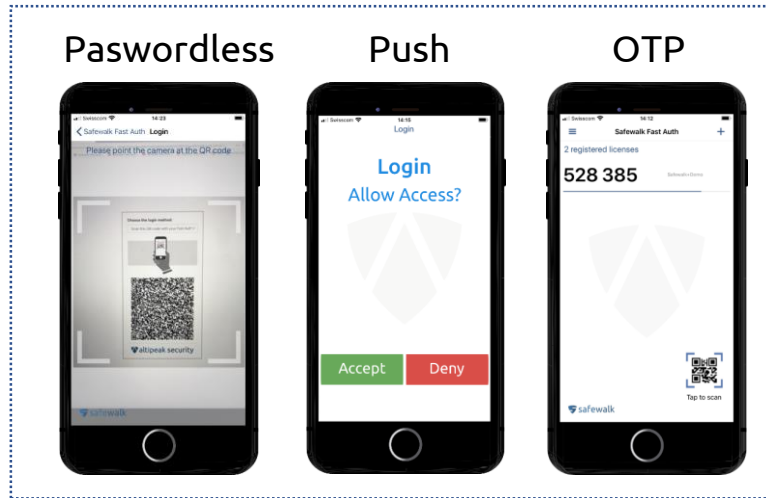
Choice of Authentication Methods

We address all your authentication needs

- ❖ Mobile Apps (Push, QR, OTP)
- ❖ HW tokens OTP, FIDO
- ❖ OATH SW & HW tokens (TOTP, HOTP)
- ❖ Virtual - SMS/E-Mail Passcodes
- ❖ Automatic call OTP
- ❖ Static passwords (local & LDAP/AD)
- ❖ Backup codes



All in one Fast Auth Mobile app



SIM based Push (Swisscom)



Fast Auth Mobile

For all use cases with seamless user experience

Desktop

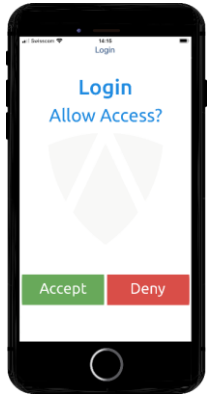


Mobile access



PASSWORDLESS
↔

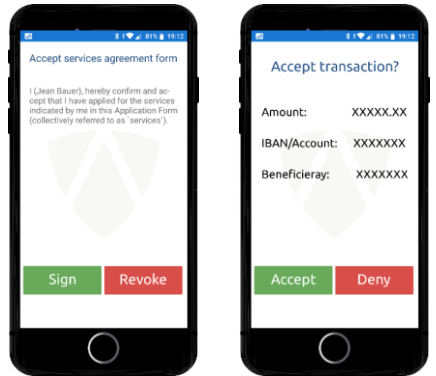
PUSH



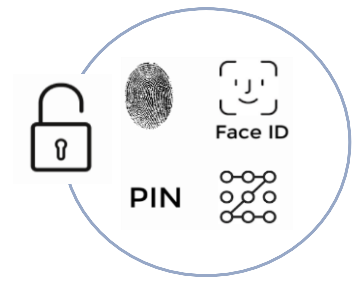
OTP



Data & transaction signature



- ❖ All in one Mobile app
- ❖ Multiple authentication methods
- ❖ Digital signature
- ❖ Asymmetric (private & public keys)
- ❖ Two-way authentication
- ❖ Multiple tokens instances
- ❖ Can be branded
- ❖ Easy integration with other Mobile apps
- ❖ Easy one click registration



Safewalk Server

Integrate MFA into your Mobile apps

- ❖ Different scenarios to deploy MFA into your Mobile apps
- ❖ No need of development for side by side apps integration
- ❖ Passwordless MFA for your Mobile apps (2 clicks strong authentication)
- ❖ No need to carry other 2FA devices

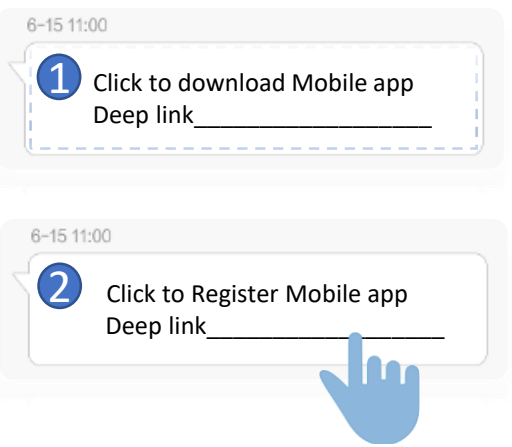


Unique deployment simplicity

Total simplicity for Mobile app Download and provisioning



User receive SMS



✓ Done

Downloaded and provisioned in 2 clicks

- ✓ Mobile app installed and provisioned in two sms clicks
- ✓ Safewalk server sends sms provisioning deep links
- ✓ Configurable for input or inputless registration
- ✓ Available for private compilations (branded apps)



Mobile ID – advantages for users

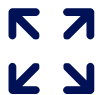
Secure, Convenient, Use the smartphone without app installation



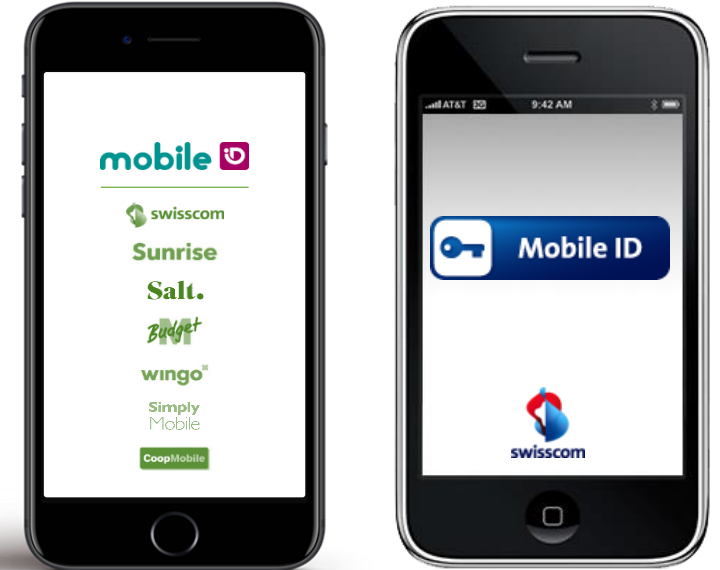
- Two-fold Security through PIN and smartphone
- Hardware token based security (LoA4)
- Asymmetric authentication (public & private key)



Authenticate quick & easy with Mobile ID
Independent of mobile phones OS
Easy and fast self activation



- Mobile ID is a joint solution of all Swiss mobile operators



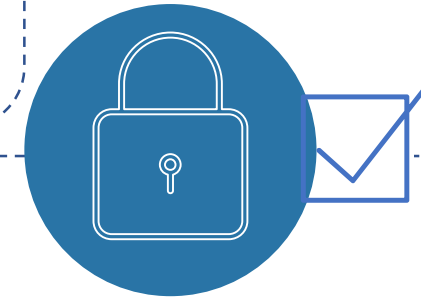
Virtual & Backup tokens

Convenient to every context



Virtual tokens:

No need to install an application
SMS / Email passcodes / Phone call
Support of failover for high availability to guarantee message delivery



Backup tokens:

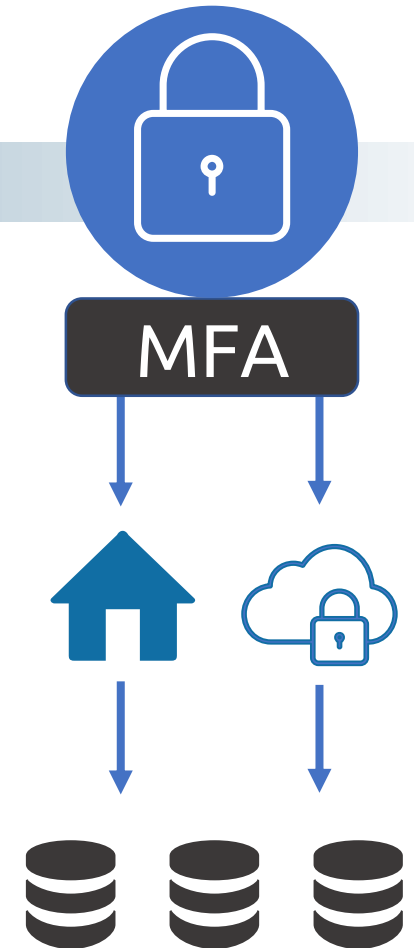
- ❖ For temporary users
- ❖ In case of urgent need for access (token or device not available or lost)
- ❖ With expiration and and/or number of attempts
- ❖ Can be configured by system administrator
- ❖ Same back-up token license can be reused for different users



Safewalk Server

Secure access to all your data

- ❖ SSO, Radius, SAML, API, AD FS
- ❖ Virtual Desktop Infrastructure (VDI)
- ❖ VPN, VPN/SSL and Firewall access
- ❖ AD FS MFA Plug-In for smooth SSO integration with SharePoint, Office365 and many more
- ❖ Windows desktops and servers (including RDP & RDS)
- ❖ Windows Logon Credentials Provider for Desktop Authentication & Remote Access
- ❖ RDWeb/OWA and any ASP .Net form Application
- ❖ Multiple AD/LDAP Directory servers & internal users

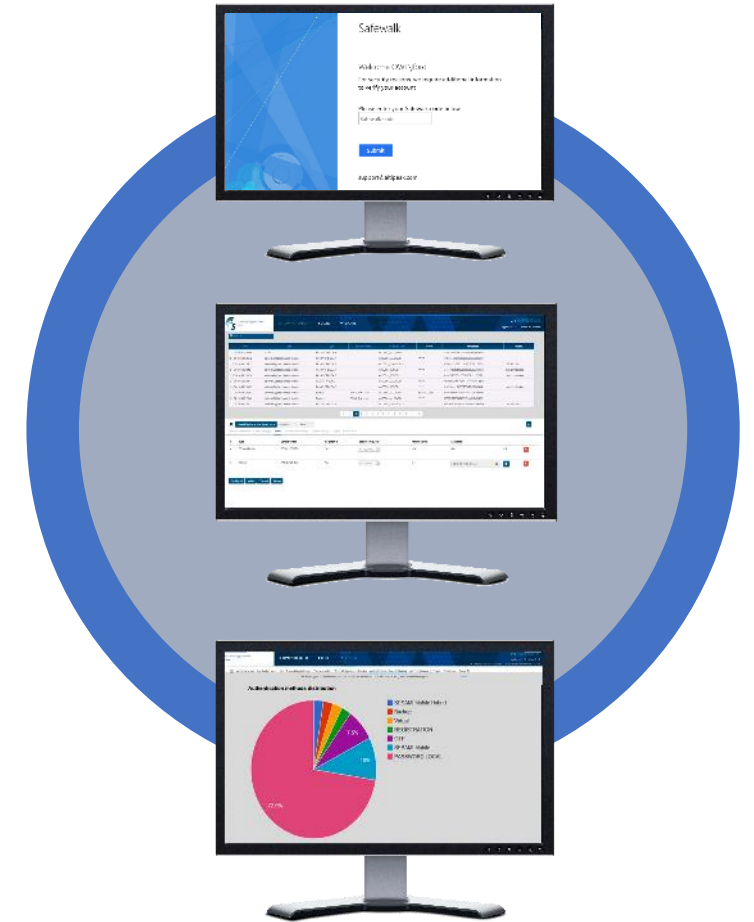


.....and many more

Safewalk Server

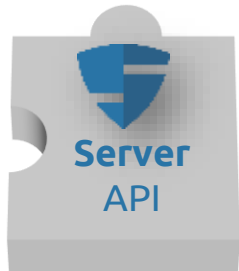
Rich functionality, Intuitive, Simple

- ❖ Simple and automatic user provisioning
- ❖ Role based settings, multi-level configuration
- ❖ Groups support and AD groups mapping
- ❖ Scalable with High Availability
- ❖ Mobile provisioning & authenticators settings
- ❖ Automatic association rules
- ❖ Self-contained (Linux)



Safewalk Server

Full OAuth2 RESTful API to integrate and use Safewalk services in other applications



- ❖ Easy and fast integration within any existing IAM framework
- ❖ Allow flexible functionality extension, automation, customization
- ❖ Use of Safewalk server services from your other applications
- ❖ API library covering all Safewalk server functionality

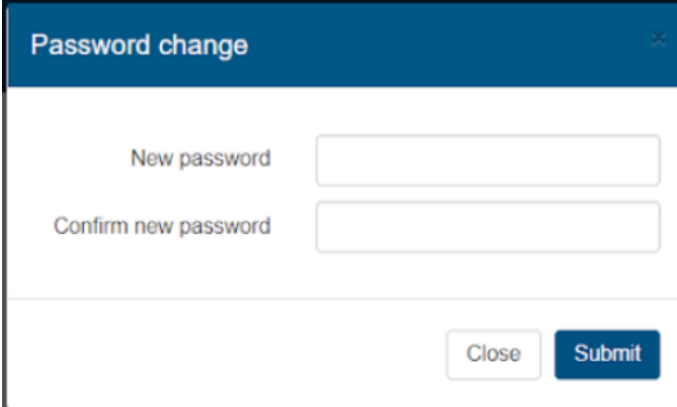


Secure MFA Password reset portal

Reduce helpdesk: Password reset & forgotten passwords

Compatible with other MFA products

- ❖ Easy and secure self-service portal for password reset.
- ❖ A user can access the self-service portal independently of any helpdesk and reset its password on its own.
- ❖ At any time
- ❖ Before the password has expired
- ❖ After the password has expired



The screenshot shows a web form titled "Password change" with a close button (X) in the top right corner. The form contains two input fields: "New password" and "Confirm new password". At the bottom right of the form, there are two buttons: "Close" and "Submit".



Business models

We are flexible to fit with your context and needs

SaaS (Swiss hosted service operated by Swisscom)

On Premise

Private Cloud (Azur, Amazon, Swisscom or other)

Perpetual license/user + yearly maintenance & support (18%)

Monthly subscription all in

Pay per use (for large volumes of users and/or occasional users)



KEY DIFFERENTIATORS

